

St. Mary  
Magdalene  
CATHOLIC CHURCH

## [Connect With Us](#)

[Join Our Mailing List](#)

[Forward to a Friend](#)



[Visit Our Church Website](#)

## St. Mary Magdalene E-News November 17, 2016

### A Note From Father Donald Staib

Members of the Parish,

In December we have a rotation of Parish Council members. I want to thank these parishioners who have completed terms: Christine Qubeck, Denise Miles, Bette Foster, Kathy Lynch, and Jenny Anglum. They have served in challenging and eventful times, and our parish has benefitted from their service.

Our parish custom is for members to nominate themselves and we will pull names at the turn of the year - just like the Apostles did when they selected Matthias to replace Judas. Nomination blue forms are on the table in the lobby. Please give them to me after Mass in the next few weekends.

Thank you to all parish members who have extended their pledges for the new church. You have helped us enormously as we are moving past the half way mark of construction and discovering new costs we did not anticipate. There is a note below about pink pledge forms for extensions of pledges - and we very much appreciate new pledges.

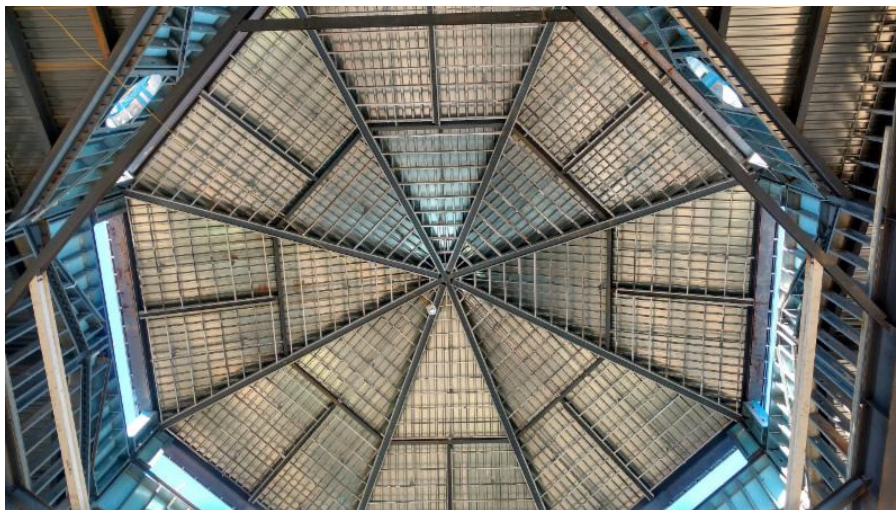
## Pictures & Notes On The Church

The Our Church Our Time capital campaign to build our church began in 2013 and was intended for 4 year pledges. December 2016 marks an end to most of those 4-year pledges which means pledge payments will stop flowing into our savings. Some of you have renewed or extended your pledge to help us meet the goal to include the chapel in our construction plans. We are grateful.

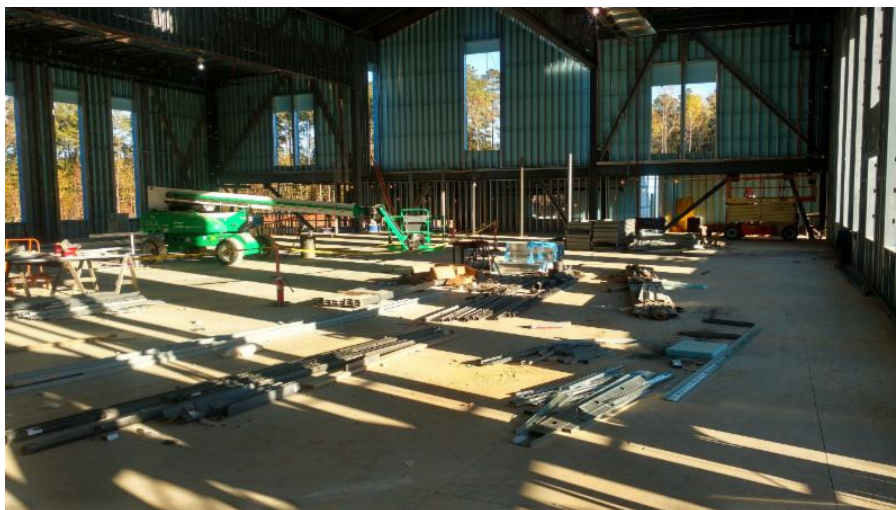
If you are able to continue your pledge payments for an additional 1 year, 2 year, 3years or more, please pick up a pink pledge form in the lobby and return it in the collection basket or to the church office.

Here is a picture taken from the middle of the church looking up at the dome. It was

taken on a beautiful day -



Here are pictures of the interior one taken toward the altar and one taken toward the entry doors -

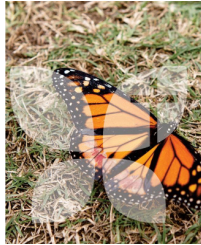


**DONATE NOW To OUR NEW CHURCH**

(Click on the above link to Donate)

Father Donald Staib  
StMM E-News  
[donfs22@aol.com](mailto:donfs22@aol.com)

## Our Columbarium



The Columbarium committee has set up four after Mass columbarium information sessions. Meeting dates are November 19-20, December 3-4, January 14-15 & January 28-29, 2017.

The sessions will focus on the Catholic Church position on cremation, specifications of the Columbarium area, guidelines, pricing and the reservation process. In the convenience of your home you will be able to complete the reservation process which is part of the new St. Mary Magdalene website. No waiting in line, no need to schedule appointments. You will be able to select your preference of which wall and which particular niche you are interested in reserving.

The committee is prepared to spend as little or as much time with each parishioner based on his or her preference. Reservations are "first come first reserved." These pre-construction reservations are based on your total satisfaction of the completed Columbarium. The target date for dedication of the Columbarium is in conjunction with the dedication of our new Church in July 2017. [columbarium@stmm.net](mailto:columbarium@stmm.net) has been established to create an easy communication link between you and the columbarium committee.

## Helping Hands Thanksgiving Meal Collection



**Western Wake Crisis Ministry Thanksgiving Meal Collection**-All donations for the thanksgiving meals for Western Wake Crisis Ministry in Apex are due this weekend, Nov. 19<sup>th</sup>/20<sup>th</sup>. Please drop your donations off in the lobby before or after all Masses. The donations will be transported to WWCM at 12pm (Noon) on Sunday.



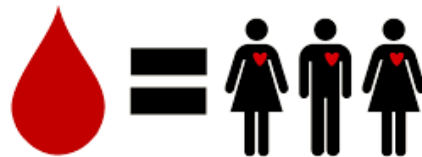
## Helping Hands Angel Tree



The **Angel Tree** is in the lobby filled with ornaments for needy children from Catholic Parish Outreach and Western Wake Crisis Ministry. Attach the ornament to the gift/food/contribution to help us track all donations. Feel free to wrap or bag gifts for the children (star tags). No other gifts should be wrapped. All contributions should be placed under the tree no later than 12 noon on Dec. 18th.

## St. Mary Magdalene Blood Drive

one pint of blood



can save up to **three lives**

St. Mary Magdalene's Blood Drive will be this Saturday, Nov. 19th from 8:30am - 12pm. Sign up at [www.mysignup.com/stmm](http://www.mysignup.com/stmm). The blood drive will be in honor of our active military and veterans! Please contact Bob Wolf at [bobwolf5679@yahoo.com](mailto:bobwolf5679@yahoo.com) or 352-397-9793 with questions. One pint of blood can save up to three lives!

**WE MUST HAVE AT LEAST 25 PEOPLE SIGN UP FOR THE DRIVE OR REX BLOOD SERVICES WILL NO LONGER COME TO StMM.** Please use the link above to schedule your donation TODAY! Thank you for your support!

## St. Mary Magdalene Christmas Jam 2016



St. Mary Magdalene's Christmas Jam 2016 will take place on Saturday, December 10th from 6-9pm. The Jam will benefit the StMM Music Ministry. The StMM Music Ministry plays a critical role in making the gym feel like a church and they need our help to make the new church feel like a cathedral when it opens!

The KofC is sponsoring a fundraiser dinner and concert. Dinner will be served from

6-7:15pm in the dining hall with a Christmas concert to follow in the Gym. All proceeds will benefit the StMM Music Ministry. Through the sales of dinner and concert tickets and tax deductible donations, we hope to raise \$25,000 to put toward the purchase of a grand piano.

Please see the flyer below to find out how to purchase tickets or make a tax deductible donation.

### [Christmas Jam 2016 Flyer](#)

## Catholic Parish Outreach Christmas Honor Cards

*Give Gifts that reflect the true meaning of Christmas!*

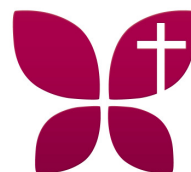
*Catholic Parish Outreach Christmas Honor Cards*



Did you know that last year CPO gave food and children's clothing to 9,600 a month? Honor the special people on your holiday gift list by making a donation to CPO. We will send a beautiful Christmas honor card designed by local artist Sofia Pietrus (from Our Lady of Lourdes School) to everyone on your gift list. Information on how to order the cards can be found at [www.cporaleigh.org](http://www.cporaleigh.org) or call CPO at 919-873-0245 x230. Forms are also available on the table in the lobby or use the link below to print off an order form.

### [Honor Card Order Form](#)

## StMM School Announcements



**StMM School** offers an excellent education for children in Pre-K 3 through 8th grade. We follow the curriculum of the Diocese of Raleigh, which is based on national standards. At StMM we use an accelerated instructional program and teach at the 75<sup>th</sup> percentile. We offer an academically gifted program for children in grades 2-5, two years of high school

math, and honors-level language arts and science in middle school. We are one of the feeder schools for Cardinal Gibbons High School, and we send more students to Gibbons than any other Catholic middle school. We invite you to visit the school, meet the administrators and talk to our teachers. We have an open house on Dec 8th after the 8:15am Mass of the Immaculate Conception. We will begin with an information session and will follow with tours of the school. Other dates are Jan 5th & Feb 16th (both 8:30-10am). On Sun, Jan 8th we will have a Pre-School Open House before and after all morning Masses. Other dates and a link to RSVP at [www.school.stmm.net/admissions](http://www.school.stmm.net/admissions). Email Claudia Klavon at [Klavon@stmm.net](mailto:Klavon@stmm.net) with any questions.

## Reflection - November 20, 2016

If we had read Jesus as "Here's what it means to be human," rather than "Here's how to get to heaven," we would have a much less contentious Christianity.

All most of us have is our own experience. So this is a great liberation, that we finally have a God figure who says that we can trust our own experience. I'm convinced that that's really what it means to carry the cross. To carry the burden of your own experience, even if it might be wrong. That's the cross, because you're never sure that you are right. And yet, I know that I am who I am and this is what I've gone through, and I've got to carry this, the mystery of who I am.

I think He's saying "I'm willing to bear the burden of my own reality wherever it leads me, never sure that it's right. That's why it's called faith, and why faith is so rare, and why Jesus said "When the Son of Man returns, will He find any faith on earth?" I think that Jesus really had doubts. Religion is common, it's on every street corner. Faith is very rare. Jesus came to teach faith.

Father Richard Rohr, Franciscan Priest

STMME-News, 625 Magdala Place, Apex, NC 27502

[SafeUnsubscribe™ {recipient's email}](#)

[Forward this email](#) | [Update Profile](#) | [About our service provider](#)

Sent by [lynch@stmm.net](mailto:lynch@stmm.net) in collaboration with

**Constant Contact** 

Try it free today